

Installation guide

Eppendorf Xplorer® connect

English (EN)

This document is a supplement to the operating manual for the "Eppendorf Xplorer" and "Eppendorf Xplorer plus" electronic pipettes and does not replace it. To operate the pipettes, read the operating manual. The current version can be found on the Internet under www.eppendorf.com/manuals.

1 Intended use

The "Eppendorf Xplorer connect" radio module is designed as a modification kit for the Eppendorf Xplorer and Eppendorf Xplorer plus electronic pipettes with a USB port and an On/Off key.

2 Other applicable documents

The following documents also apply:

- Eppendorf Xplorer/Xplorer plus operating manual
- VisioNize pipette manager installation guide
- VisioNize pipette manager operating manual

3 Features

The radio module enables wireless data exchange between the electronic pipette in **Opt** operating mode and the "VisioNize pipette manager" control panel.

4 Product overview

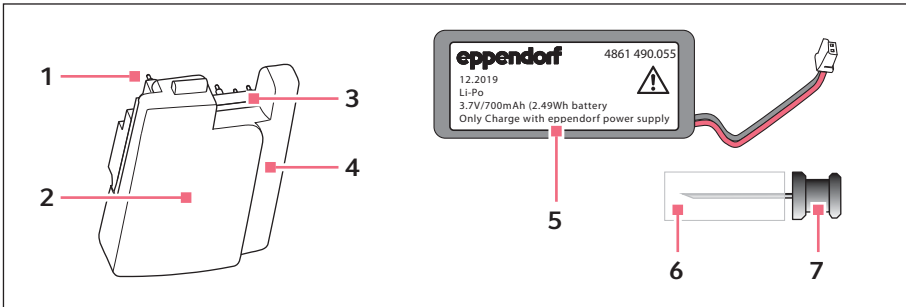


Fig. 1: Radio module for Eppendorf Xplorer and Xplorer plus

1 Contact pins

2 Labeling

Product name, HVIN, FCC-ID, IC-ID, serial number and CE logo

3 Cutout for plug

4 Recess for cable

5 Li-polymer rechargeable battery

700 mAh

Short design

6 Rubber foam protection

7 Pin

For opening the USB cover

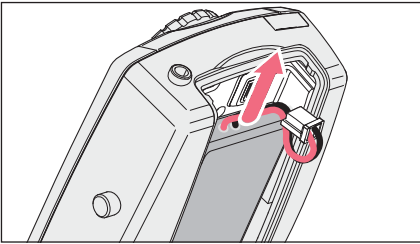
Installation guide

2 Eppendorf Xplorer® connect
English (EN)

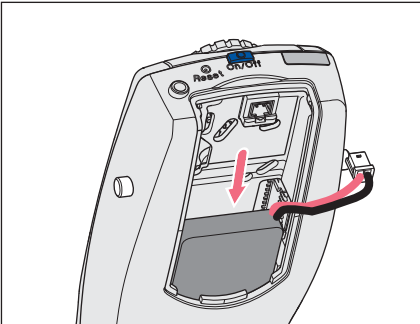
5 Delivery package

Quantity	Description
1	"Eppendorf Xplorer connect" radio module
1	Lithium polymer rechargeable battery 700 mAh (short design)
1	Pin (for opening the USB cover)
1	Eppendorf Xplorer connect installation guide

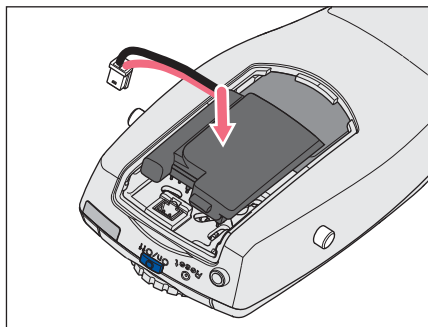
6 Inserting the radio module



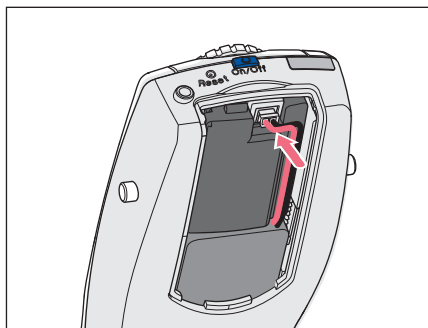
1. Open the rechargeable battery compartment lid.
2. Remove the long rechargeable battery (750 mAh).



3. Insert the short rechargeable battery (700 mAh) with the cable pointing to the right.



4. Place the radio module loosely on the PCB.
The contact pins only touch the contact points on the PCB.



5. Route the rechargeable battery cable at the side of the radio module and insert the plug.
The cable fixes the radio module.
6. Close the rechargeable battery compartment lid.
7. Set the *Date* and *Time* (Xplorer plus only).
The pipette is prepared for radio communication with the control panel (VisioNize pipette manager).

7 Charging the rechargeable battery



WARNING! Personal injury due to incorrect handling of the rechargeable battery.

- ▶ Only use rechargeable batteries supplied by Eppendorf.
- ▶ Never pierce, crush or throw the rechargeable battery.
- ▶ Only use the rechargeable battery in the supplied device.
- ▶ Do not touch a leaking rechargeable battery.
- ▶ Do not use a damaged rechargeable battery.
- ▶ Dispose of rechargeable batteries in accordance with the legal requirements.

1. Fully charge the rechargeable battery before performing the software update.



How to charge the rechargeable battery is described in the pipette's operating manual (chapter 5.1 Charging the rechargeable battery).

Installation guide

Eppendorf Xplorer® connect

English (EN)

8 Pipette software update

After the radio module has been installed, the pipette software must be updated.



The software update process is described in the VisioNize pipette manager installation guide.

After the firmware has been successfully updated, the *Option* menu is extended by the *Wi-Fi* submenu.

Menu	Submenu	Description
<i>Wi-Fi</i>		
	<i>Wi-Fi on/off</i>	Enables or disables the radio interface.
	<i>Connect AUTO</i>	The settings for the radio network are determined and entered automatically.
	<i>Connect MAN</i>	The settings for the radio network must be entered manually.
	<i>Recent connections</i>	Lists the recent radio connections.
	<i>Delete connection</i>	Deletes a radio connection.
	<i>Status</i>	Displays the current connection data.
	<i>Version</i>	Displays the software version and the hardware version of the radio module.

9 Technical data

9.1 Radio module

Transmit peak power	max. 0.088 W
Power level	19 dBm
Frequency band	2412 Hz – 2462 Hz
Radio channel	1 – 11
Approval	FCC, IC
Standard	802.11 b/g/n

9.2 Rechargeable battery

Type	Li-polymer rechargeable battery
Design	short
Rated capacity	700 mAh
Nominal voltage	3.2 V
Charging time	1 h
Weight	16 g

Your local distributor: www.eppendorf.com/contact

Eppendorf AG · Barkhausenweg 1 · 22339 Hamburg · Germany

eppendorf@eppendorf.com · www.eppendorf.com